



SUSHISAMBA<sup>®</sup>

LONDON EVENTS

## SUSHISAMBA PRIVATE DINING & EVENTS

Beating at the heart of every **SUSHISAMBA** is a deep appreciation for enjoying life with friends, colleagues and loved ones.

With two incredible locations, a variety of unique spaces and an expert culinary team, **SUSHISAMBA** offers a one-of-a-kind event experience.

Our dedicated events team have a wealth of experience in curating a wide range of events; from corporate functions, product launches and music showcases, to birthday parties and bespoke tasting experiences.

Known for our inventive dishes, critically acclaimed cocktail program and deep commitment to service, you can rest assured that whatever the occasion your guests will enjoy an unforgettable event.

*We welcome you... Bem-vindo!*



# LONDON LOCATIONS



We offer two distinct London destinations, both with the flexibility to host an array of events perfect for celebrating, networking and client entertainment.

From the sparkling lights of the London skyline at our Heron Tower location through to the living ceiling in our Grade II-listed Market Building Covent Garden locale, there are a multitude of event spaces and layouts to suit your requirements.

# LOCATIONS

## SUSHISAMBA HERON TOWER

Located on the 38th and 39th floors of London's Heron Tower, **SUSHISAMBA** offers unparalleled views of London, from the Wembley arch to the West, the Olympic Park to the East, the Thames to the South and stunning cityscapes inbetween. Two express scenic lifts transport guests to the restaurant at five metres per second, taking entertaining in the capital to new heights.

Comprised internally of a main restaurant, three bars and a private dining room, the venue boasts flexibility to host guests in a number of different formats and styles simultaneously.

The iconic **SUSHISAMBA** tree sits at the heart of the venue on one of two stunning outdoor terraces. Surrounded by the sky and with the lights of London in every direction, it truly feels as though you're dining amongst the stars. **SUSHISAMBA** Heron Tower event capacity is 400 guests.



## SUSHISAMBA COVENT GARDEN

Located at the famed Opera Terrace atop the historic Grade II-listed Market Building, this striking space is a vibrant addition to the area. Crowned by an Eric Parry-designed glass roof, the restaurant runs along the entire east side of the market, providing guests beautiful rooftop views across the Piazza.

Bold in design, **SUSHISAMBA** Covent Garden offers a host of inviting event spaces, including the bar's 'living canopy' featuring South American and Japanese plants; a theatre-style open kitchen and robata grill; and a high energy sushi bar underneath a bespoke Japanese lighting installation. The space can accommodate 300 guests standing and up to 120 guests for a seated event. In addition to exclusive hire of the venue, **SUSHISAMBA** Covent Garden Japanese-inspired private dining room, with its own entrance and a private balcony, can accommodate 15 guests.





# HERON TOWER EVENT SPACES

## SUSHISAMBA RESTAURANT, TERRACE, BAR - 38<sup>TH</sup> FL

As the largest space within **SUSHISAMBA** Heron Tower, the main dining room features a double-height ceiling with distinctive hanging pendant lighting. Flanked by both the East and Tree Terraces and featuring our sushi bar and robata grill, this dramatic, airy space is perfect for both one-of-a-kind seated events or standing cocktail and canapé parties.

The highest outdoor dining space in Europe, the East Terrace offers spectacular views of the London skyline with casual lounge furniture and a bar, serving signature cocktails and Champagne. Ideal for cocktail and canapé networking events, the space sits aside the main dining room and can be used separately or in conjunction with the main space. The **SAMBAROOM** is reserved as a back-up space in case of inclement weather and so you're always covered.

The Tree Terrace is at the very heart of **SUSHISAMBA** Heron Tower, featuring a beautiful bar with a 26ft custom orange tree - a sculptural design that reinforces the restaurant's earth-to-sky motif. Your guests will feel as though they are in a garden in the sky, surrounded by wood banquettes, an outdoor fire pit and casual, plentiful seating. Please note that whilst the Tree Terrace can be enjoyed with exclusive hire of the 38th Floor, it cannot be hired on its own.



320

Cocktail



110

Seated



200

Theatre



### SAMBAROOM BAR AND LOUNGE - 39<sup>TH</sup> FL

Our new South American inspired **SAMBAROOM** Bar and Lounge sets the stage for an unforgettable event no matter what the celebration. From the moment you arrive through a gilded canopy entrance, the bar welcomes you with a glittering display, soft curves, and warm orange tones; offering plush seating and an overall capacity of 100 guests.



100  
39th Total

## SAMBAROOM PDR- 39<sup>TH</sup> FL

Located on the 39th floor our new Private Dining Room sits above the main dining room and features stunning views of East London. The versatile space offers the unique ability to seat 30 guests to intimate dinner at the central table artfully suspended from the ceiling, or as a more casual lounge setting for up to 50 guests standing. The venue is fully equipped with a state-of-the-art AV system.

The **SAMBAROOM** Bar and PDR space can be combined for larger events, offering a total capacity of up to 100 guests. When hired exclusively the space includes a private entrance and cloakroom.



50

Standing



30

Seated



### SUSHISAMBA EXCLUSIVE HIRE

Larger events can be accommodated across the 38th & 39th floors with a capacity reaching 400 guests. With the sweeping staircase and **SAMBAROOM** overlooking the main dining room and tree terrace below, the two floors operate an feel as one.



400

Cocktail





# COVENT GARDEN EVENT SPACES

## EXCLUSIVE HIRE

**SUSHISAMBA** Covent Garden's dining room, with its dramatic black and white marble floors, offers guests three distinct environmental experiences: The bar's 'living ceiling' featuring South American and Japanese plants; a theatre-style open kitchen and robata grill; and the high energy sushi bar, alongside an open air terrace with sweeping views of the Piazza. Accommodating 120 guests for a seated dinner or up to 300 guests standing, this bold addition to the **SUSHISAMBA** family is as unique as it is impressive.



300

Cocktail



120

Seated



## PRIVATE DINING ROOM

From a lunch meeting to an intimate meal to a full blown celebration, our Private Dining Room is situated in one of the oldest parts of the original market building, the South Pavilion. This intimate space comes complete with its own private balcony, perfect for welcome drinks or a post dinner cigar.

The room offers ultimate flexibility: reversible Japanese screens with faceted mirrors on one side and traditional Japanese pastoral scenes on the other easily transform the space for business or pleasure. The room's centerpiece, a dramatic handmade circular dining table seats up to 15 guests and the room comes complete with a plasma screen and dedicated AV system.



15

Seated

# ENTERTAINMENT & PRODUCTION

With a wealth of experience, our events team are on hand to assist with all kinds of event production and design.

Whether you're hosting the biggest celebration with roaming performers and a ten piece band or an intimate engagement for two, we've collated a little black book featuring world class talent.

From staging, badging and floristry to Samba dancers, singers and Capoeira martial artists, our team loves to create the perfect setting to suit your event requirements and needs.

Add our state-of-the-art audio visual system to the mix, and the possibilities are endless.



# CUISINE

**SUSHISAMBA's** menus offer an inventive culmination of three countries: Japan, Brazil and Peru. From Japanese tempura and sushi, to Brazilian churrasco and moqueca, to Peruvian anticuchos and seviches, the culinary creativity is limitless with something for every palate.

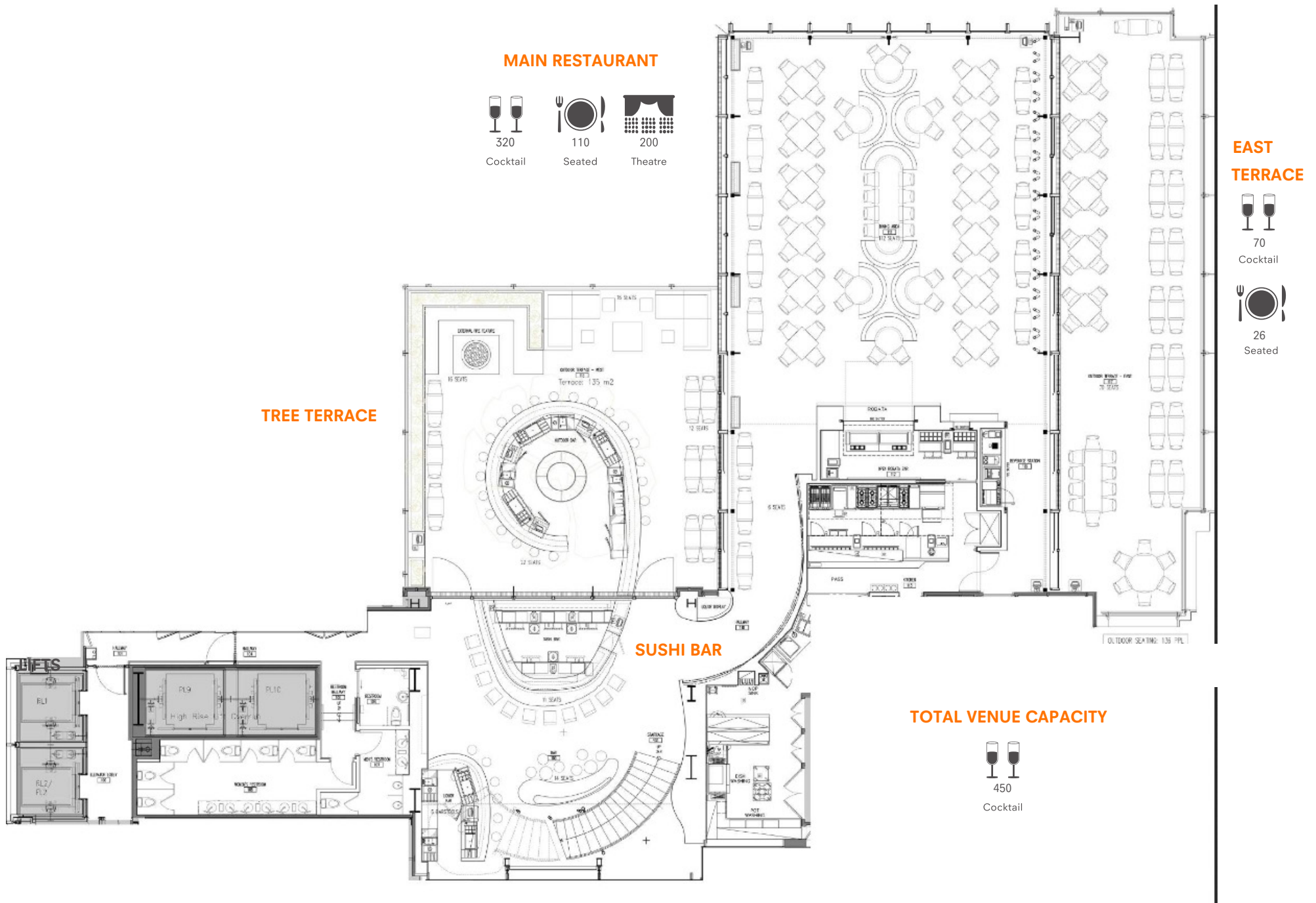
The open kitchen and fiery robata grill offer brilliantly roasted and flavored meats, vegetables and fish. **SUSHISAMBA's** conceptual small-plate style of service encourages a “shared” dining experience for guests during seated events and an exciting selection of signature canapés for guests during receptions and parties.



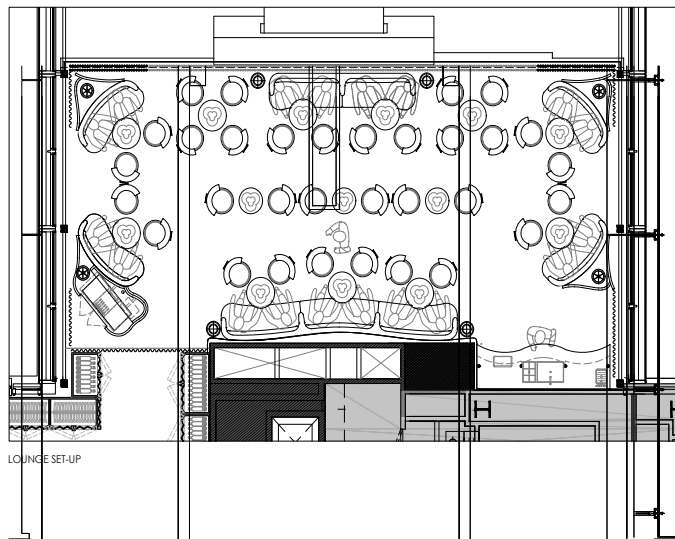
# BEVERAGE

Complementing the cuisine, the restaurant offers an expansive selection of specialty cocktails and cultural spirits including Japanese whisky and sake, in addition to the robust wine and Champagne collection.

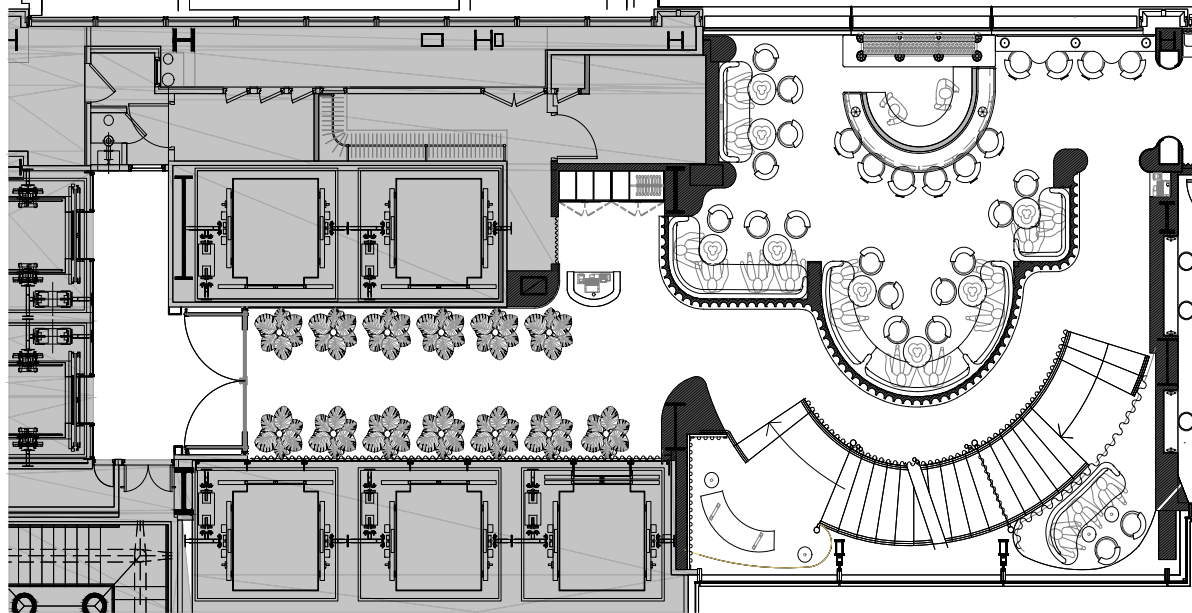
# SUSHISAMBA® HERON TOWER - 38TH FL



# SAMBAROOM - 39TH FL

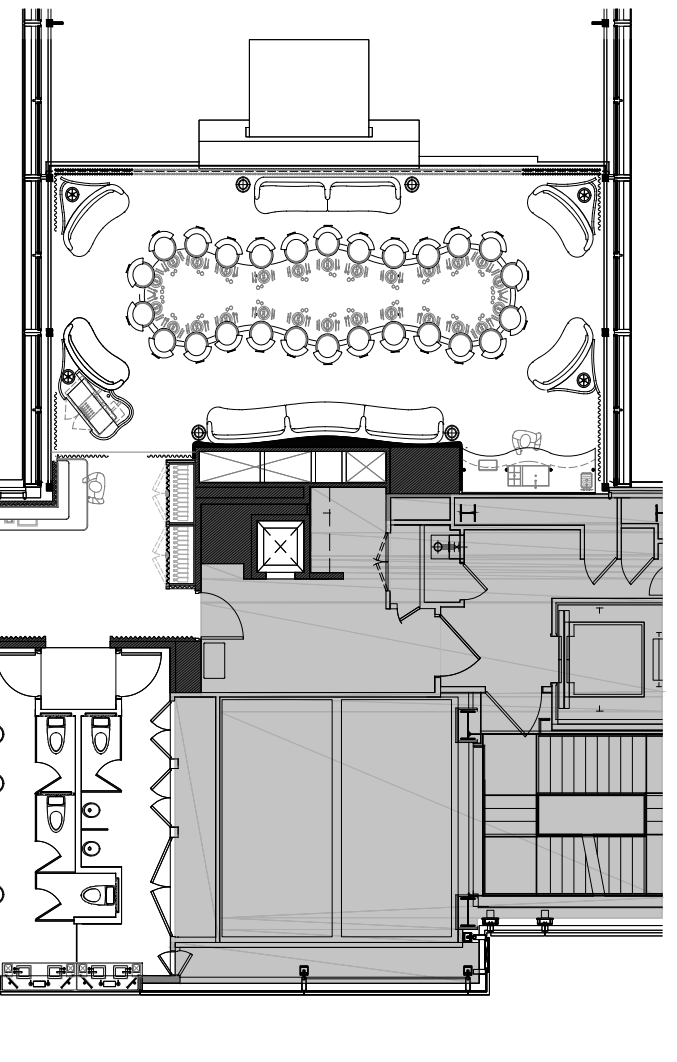


LOUNGE SET-UP



SAMBAROOM BAR

50  
Cocktail



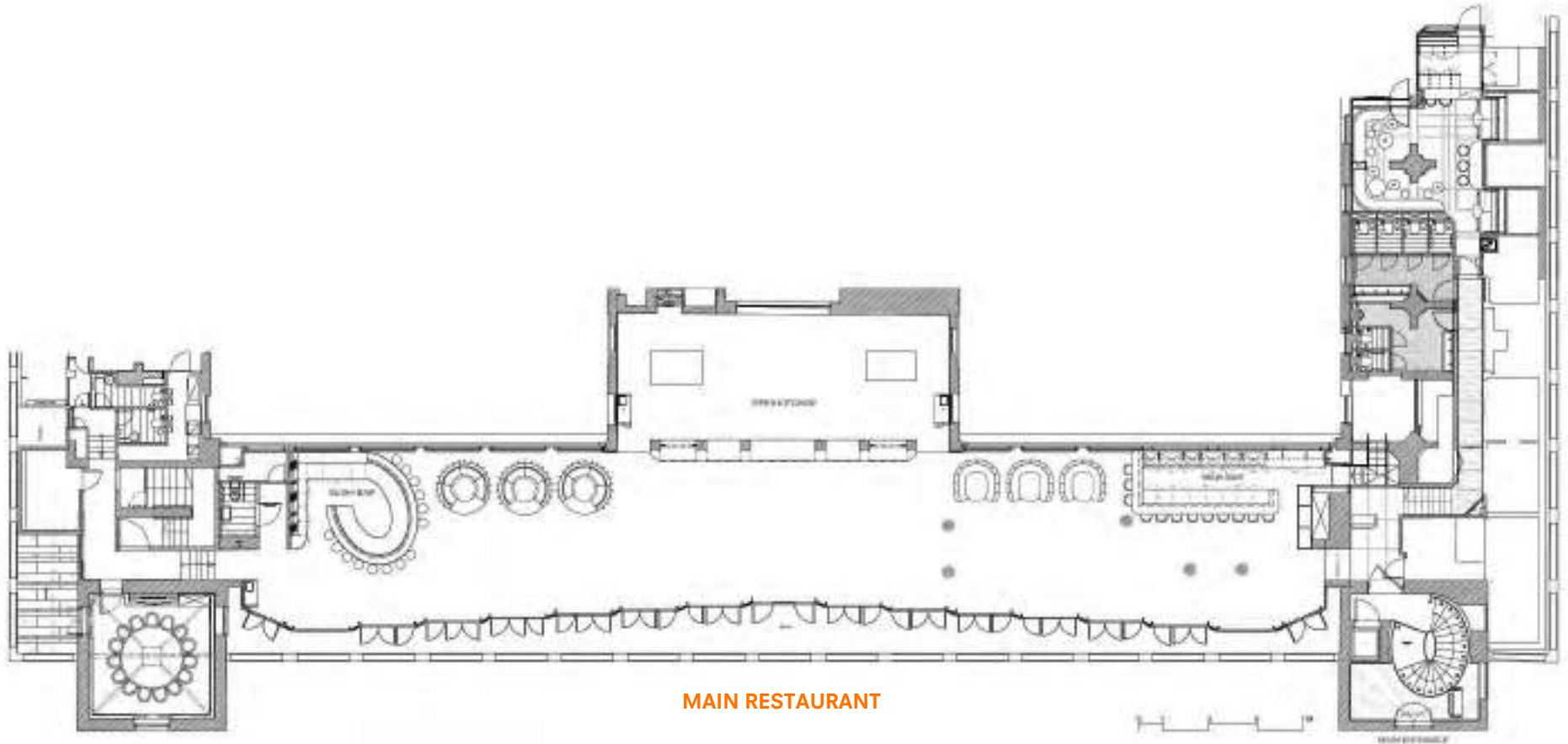
SAMBAROOM PDR

50 30  
Cocktail Seated

SAMBAROOM TOTAL

100  
Cocktail

# SUSHISAMBA® COVENT GARDEN



## PRIVATE DINING ROOM



15  
Seated

## TOTAL CAPACITY



300  
Cocktail

120  
Seated

